

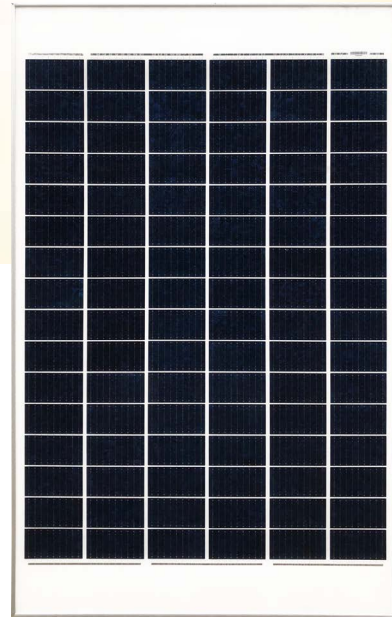


## Old Module Replacement

# KuPower Mono

235 W ~ 255 W

CS5PH-235 | 240 | 245 | 250 | 255P



Perfect Size to Replace 5" 96 Cell Module  
Excellent Electrical Compatibility

- Module size 1602 x 1061 mm  
Perfect size to replace 5" 96 cell module
- Single module replacement possible
- Minimize BoS cost for module replacement
- Can be used to replace other brand 5" 96 cell module

\* Both 5BB and MBB modules will be supplied.

**10 Years** Enhanced Product Warranty on Materials and Workmanship\*

**25 Years** Linear Power Performance Warranty\*

\*According to the applicable Canadian Solar Limited Warranty Statement. For detailed information, please contact your local Canadian Solar sales and technical representatives.

## Enhanced Energy Yield and Product Reliability

- Low power loss in cell connection
- Better shading tolerance
- Minimizes micro-crack impacts
- Heavy snow load up to 5400 Pa, enhanced wind load up to 2400 Pa\*\*

### MANAGEMENT SYSTEM CERTIFICATES\*

ISO 9001:2015 / Quality management system  
ISO 14001:2015 / Standards for environmental management system  
ISO 45001: 2018 / International standards for occupational health & safety

### PRODUCT CERTIFICATES\*

IEC 61215 / IEC 61730 / CE  
UL 61730 / IEC 61701 / IEC 62716  
Take-e-way



\* As there are different certification requirements in different markets, please contact your local Canadian Solar sales representative for the specific certificates applicable to the products in the region in which the products are to be used.

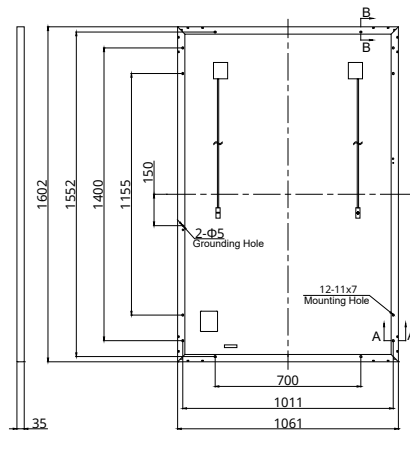
**CANADIAN SOLAR INC.** is committed to providing high quality solar products, solar system solutions and services to customers around the world. Canadian Solar was recognized as the No. 1 module supplier for quality and performance/price ratio in the IHS Module Customer Insight Survey, and is a leading PV project developer and manufacturer of solar modules, with over 46 GW deployed around the world since 2001.

\* For detailed information, please contact your local Canadian Solar sales and technical representatives.

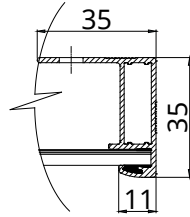
\*\* For detailed information, please refer to the Installation Manual.

## ENGINEERING DRAWING (mm)

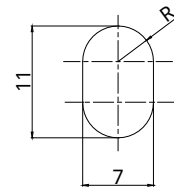
### Rear View



### Frame Cross Section A-A



### Mounting Hole



## ELECTRICAL DATA | STC\*

CS5PH	235P	240P	245P	250P	255P
Nominal Max. Power (Pmax)	235 W	240 W	245 W	250 W	255 W
Opt. Operating Voltage (Vmp)	50.8 V	51.0 V	51.2 V	51.4 V	51.6 V
Opt. Operating Current (Imp)	4.63 A	4.71 A	4.79 A	4.87 A	4.95 A
Open Circuit Voltage (Voc)	62.6 V	62.8 V	63.0 V	63.2 V	63.4 V
Short Circuit Current (Isc)	4.93 A	5.00 A	5.07 A	5.14 A	5.21 A
Module Efficiency	13.8%	14.1%	14.4%	14.7%	15.0%
Operating Temperature	-40°C ~ +85°C				
Max. System Voltage	1000V (IEC/UL) or 1500V (IEC/UL)				
Module Fire Performance	TYPE 1 (UL 61730 1500V) or TYPE 2 (UL61730 1000V) or Class C (IEC 61730)				
Max. Series Fuse Rating	15 A				
Application Classification	Class A				
Power Tolerance	0 ~ + 10 W				

\* Under Standard Test Conditions (STC) of irradiance of 1000 W/m<sup>2</sup>, spectrum AM 1.5 and cell temperature of 25°C.

## ELECTRICAL DATA | NMOT\*

CS5PH	235P	240P	245P	250P	255P
Nominal Max. Power (Pmax)	175 W	179 W	182 W	186 W	190 W
Opt. Operating Voltage (Vmp)	47.3 V	47.5 V	47.7 V	47.8 V	48.0 V
Opt. Operating Current (Imp)	3.70 A	3.77 A	3.83 A	3.89 A	3.95 A
Open Circuit Voltage (Voc)	58.8 V	59.0 V	59.2 V	59.4 V	59.6 V
Short Circuit Current (Isc)	3.98 A	4.03 A	4.09 A	4.15 A	4.20 A

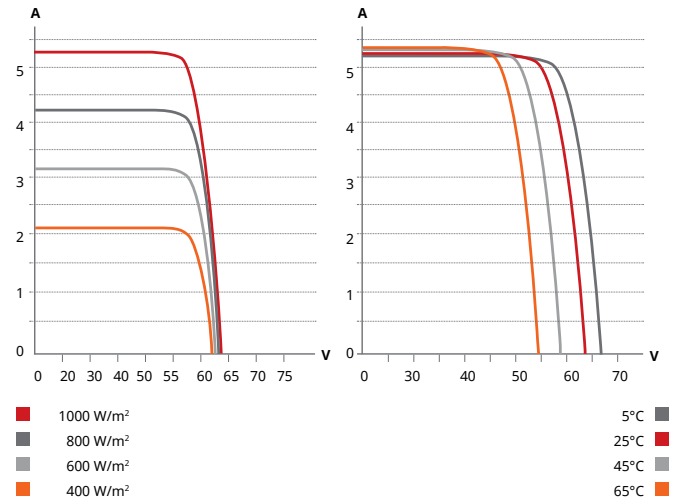
\* Under Nominal Module Operating Temperature (NMOT), irradiance of 800 W/m<sup>2</sup>, spectrum AM 1.5, ambient temperature 20°C, wind speed 1 m/s.

\* The specifications and key features contained in this datasheet may deviate slightly from our actual products due to the on-going innovation and product enhancement. Canadian Solar Inc. reserves the right to make necessary adjustments to the information described herein at any time without further notice. Please be kindly advised that PV modules should be handled and installed by qualified people who have professional skills and please carefully read the safety and installation instructions before using our PV modules.

## CANADIAN SOLAR INC.

545 Speedvale Avenue West, Guelph, Ontario N1K 1E6, Canada, [www.canadiansolar.com](http://www.canadiansolar.com), [support@canadiansolar.com](mailto:support@canadiansolar.com)

## CS5PH-255P / I-V CURVES



## MECHANICAL DATA

Specification	Data
Cell Type	Mono-crystalline
Cell Arrangement	96 [16 X 6 ]
Dimensions	1602 X 1061 X 35 mm (63.1 X 41.8 X 1.38 in)
Weight	19.2 kg (42.3 lbs)
Front Cover	3.2 mm tempered glass
Frame	Anodized aluminium alloy
J-Box	IP68, 4 bypass diodes
Cable	4.0 mm <sup>2</sup> (IEC), 12 AWG (UL)
Cable Length (Including Connector)	Portrait: 400 mm (15.7 in) (+) / 280 mm (11.0 in) (-); landscape: 1160 mm (45.7 in)*
Connector	T4 series or H4 UTX or MC4-EVO2
Per Pallet	30 pieces
Per Container (40' HQ)	840 pieces

\* For detailed information, please contact your local Canadian Solar sales and technical representatives.

## TEMPERATURE CHARACTERISTICS

Specification	Data
Temperature Coefficient (Pmax)	-0.36 % / °C
Temperature Coefficient (Voc)	-0.28 % / °C
Temperature Coefficient (Isc)	0.05 % / °C
Nominal Module Operating Temperature	42 ± 3°C

## PARTNER SECTION

