

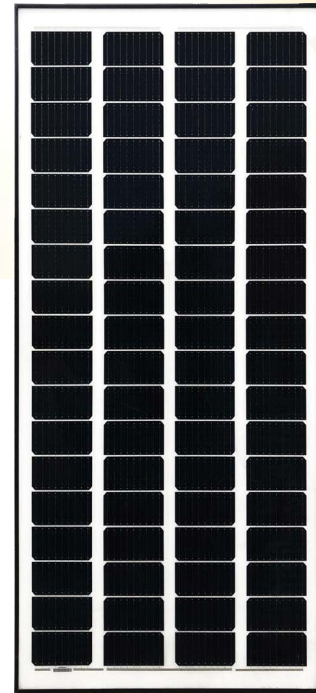


Old Module Replacement

KuPower Mono

185 W ~ 205 W

CS5AH-185 | 190 | 195 | 200 | 205M



Perfect Size to Replace 5" 72 Cell Module Excellent Electrical Compatibility



Module size 1595 x 801 mm
Perfect size to replace 5" 72 cell module



Single module replacement possible



Minimize BoS cost for module replacement



Can be used to replace other brand 5" 72 cell module

* Both 5BB and MBB modules will be supplied.

* Silver frame product can be provided upon request.



Enhanced Product Warranty on Materials and Workmanship*



Linear Power Performance Warranty*

*According to the applicable Canadian Solar Limited Warranty Statement. For detailed information, please contact your local Canadian Solar sales and technical representatives.

Enhanced Energy Yield and Product Reliability



Low power loss in cell connection



Better shading tolerance



Minimizes micro-crack impacts



Heavy snow load up to 5400 Pa,
enhanced wind load up to 2400 Pa**

MANAGEMENT SYSTEM CERTIFICATES*

ISO 9001:2015 / Quality management system
ISO 14001:2015 / Standards for environmental management system
ISO 45001: 2018 / International standards for occupational health & safety

PRODUCT CERTIFICATES*

IEC 61215 / IEC 61730 / CE
UL 61730 / IEC 61701 / IEC 62716
Take-e-way



* As there are different certification requirements in different markets, please contact your local Canadian Solar sales representative for the specific certificates applicable to the products in the region in which the products are to be used.

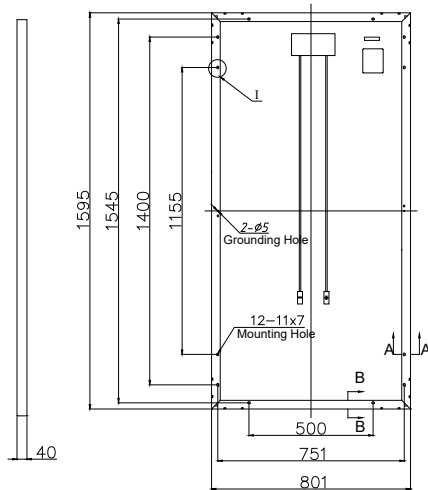
CANADIAN SOLAR INC. is committed to providing high quality solar products, solar system solutions and services to customers around the world. Canadian Solar was recognized as the No. 1 module supplier for quality and performance/price ratio in the IHS Module Customer Insight Survey, and is a leading PV project developer and manufacturer of solar modules, with over 46 GW deployed around the world since 2001.

* For detailed information, please contact your local Canadian Solar sales and technical representatives.

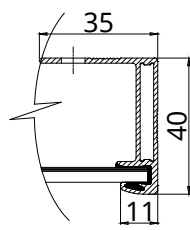
** For detailed information, please refer to the Installation Manual.

ENGINEERING DRAWING (mm)

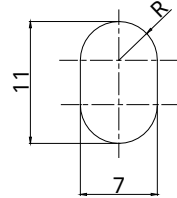
Rear View



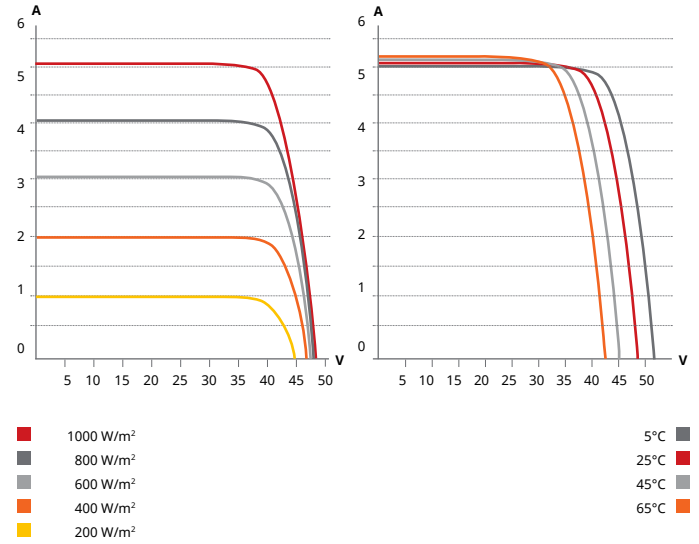
Frame Cross Section A-A



Mounting Hole



CS5AH-190M / I-V CURVES



ELECTRICAL DATA | STC*

CS5AH	185M	190M	195M	200M	205M
Nominal Max. Power (Pmax)	185 W	190 W	195 W	200 W	205 W
Opt. Operating Voltage (Vmp)	39.6 V	40.0 V	40.4 V	40.8 V	41.2 V
Opt. Operating Current (Imp)	4.68 A	4.76 A	4.83 A	4.91 A	4.98 A
Open Circuit Voltage (Voc)	48.2 V	48.4 V	48.6 V	48.8 V	49.0 V
Short Circuit Current (Isc)	4.98 A	5.06 A	5.14 A	5.22 A	5.30 A
Module Efficiency	14.5%	14.9%	15.3%	15.7%	16.1%
Operating Temperature	-40°C ~ +85°C				
Max. System Voltage	1000V (IEC) or 1500V (IEC)				
Module Fire Performance	Class C (IEC 61730)				
Max. Series Fuse Rating	15 A				
Application Classification	Class A				
Power Tolerance	0 ~ + 10 W				

* Under Standard Test Conditions (STC) of irradiance of 1000 W/m², spectrum AM 1.5 and cell temperature of 25°C.

ELECTRICAL DATA | NMOT*

CS5AH	185M	190M	195M	200M	205M
Nominal Max. Power (Pmax)	138 W	141 W	145 W	149 W	153 W
Opt. Operating Voltage (Vmp)	36.9 V	37.2 V	37.6 V	38.0 V	38.3 V
Opt. Operating Current (Imp)	3.74 A	3.80 A	3.86 A	3.92 A	3.98 A
Open Circuit Voltage (Voc)	45.2 V	45.4 V	45.6 V	45.8 V	45.9 V
Short Circuit Current (Isc)	4.01 A	4.08 A	4.14 A	4.21 A	4.27 A

* Under Nominal Module Operating Temperature (NMOT), irradiance of 800 W/m² spectrum AM 1.5, ambient temperature 20°C, wind speed 1 m/s.

MECHANICAL DATA

Specification	Data
Cell Type	Mono-crystalline
Cell Arrangement	72 (18 X 4)]
Dimensions	1595 x 801 x 40mm (62.8 x 31.5 x 1.57in)
Weight	15.25 kg (33.6 lbs)
Front Cover	3.2 mm tempered glass
Frame	Anodized aluminium alloy
J-Box	IP68, 3 bypass diodes
Cable	4.0 mm ² (IEC), 12 AWG (UL), 1000 mm (39.4 in)
Connector	T4 series or H4 UTX or MC4-EVO2
Per Pallet	38 pieces
Per Container (40' HQ)	532 pieces

* For detailed information, please contact your local Canadian Solar sales and technical representatives.

TEMPERATURE CHARACTERISTICS

Specification	Data
Temperature Coefficient (Pmax)	-0.36 % / °C
Temperature Coefficient (Voc)	-0.29 % / °C
Temperature Coefficient (Isc)	0.05 % / °C
Nominal Module Operating Temperature	42 ± 3°C

PARTNER SECTION



* The specifications and key features contained in this datasheet may deviate slightly from our actual products due to the on-going innovation and product enhancement. Canadian Solar Inc. reserves the right to make necessary adjustments to the information described herein at any time without further notice. Please be kindly advised that PV modules should be handled and installed by qualified people who have professional skills and please carefully read the safety and installation instructions before using our PV modules.

CANADIAN SOLAR INC.

545 Speedvale Avenue West, Guelph, Ontario N1K 1E6, Canada, www.canadiansolar.com, support@canadiansolar.com